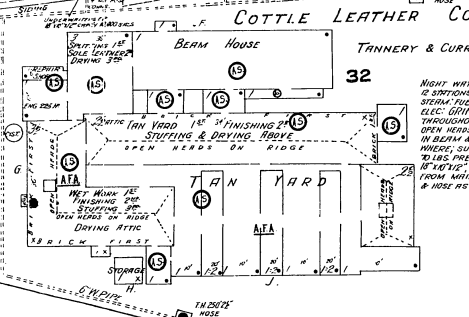
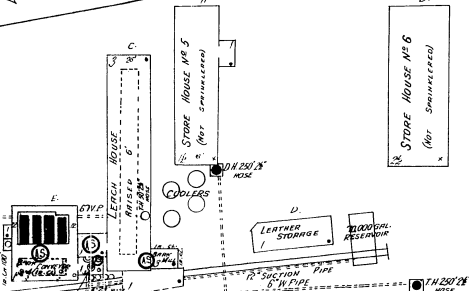
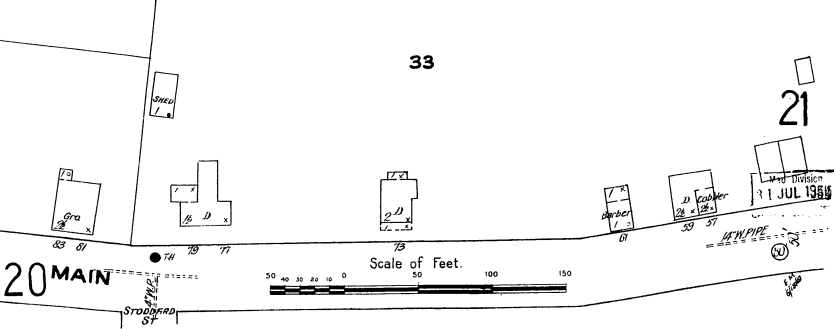
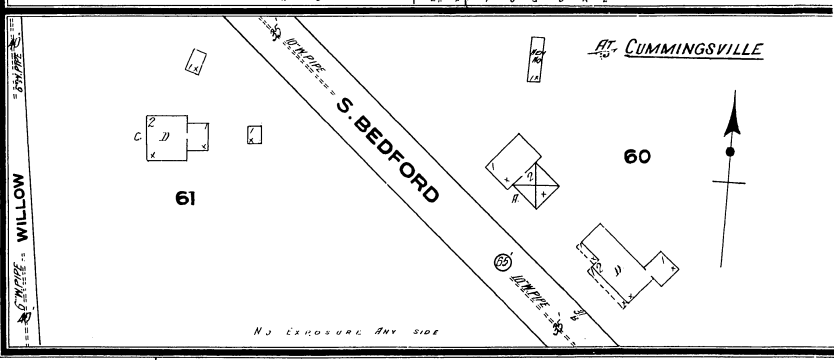
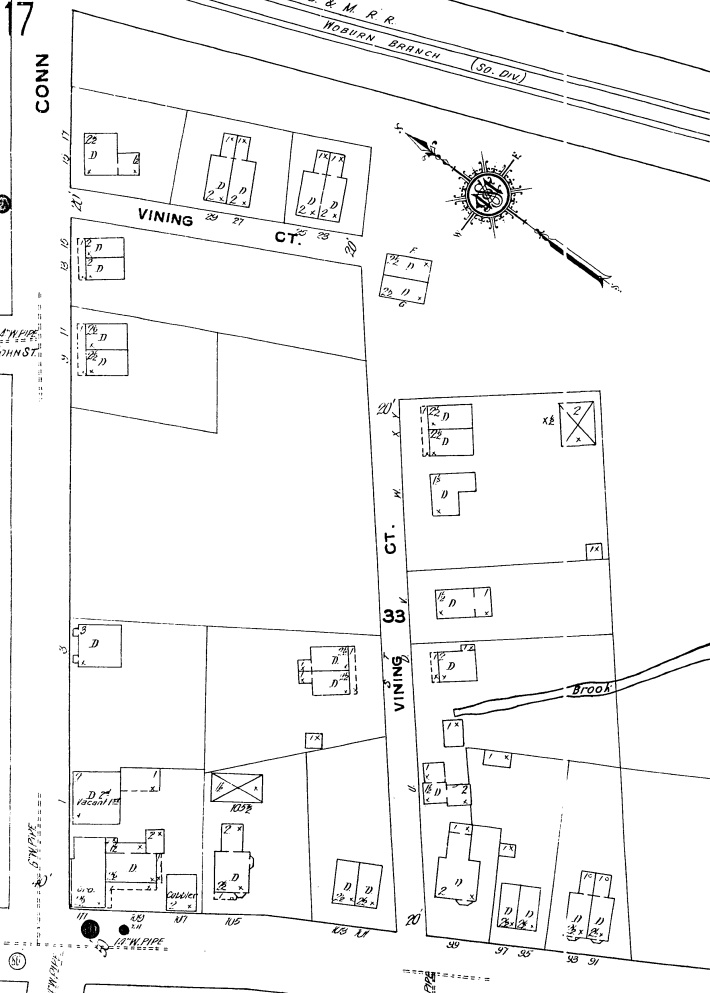
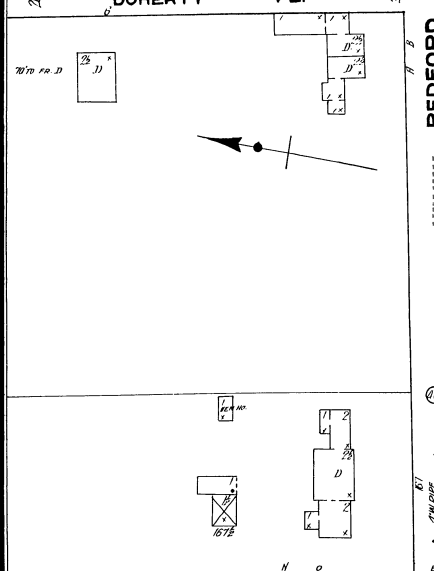
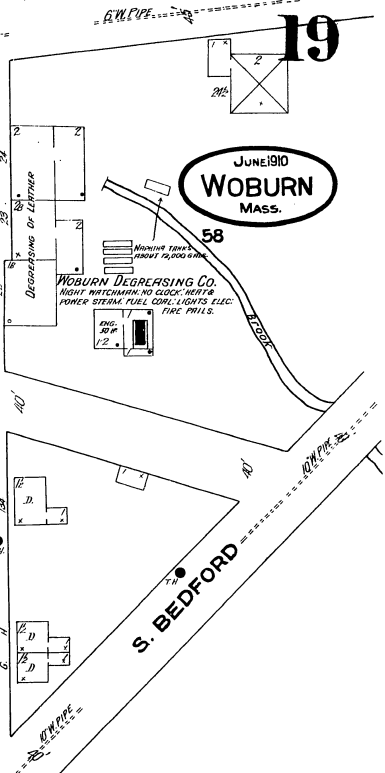
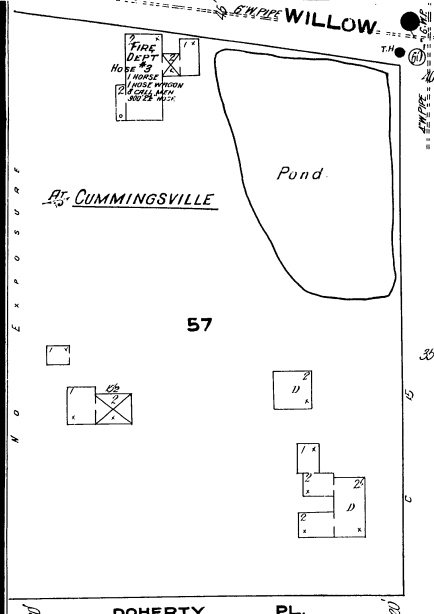


BRYANT



NIGHT WATCHMAN, LED MARGRET CLOCK; 24 BATTERY-NO. 1000; WEST & POWER STEAM FUEL OIL & SPENT TIN LIGHTS 600 & ELEC. DRINKING ALL AUTOMATIC SPRINGERS THROUGHOUT AS SHOWN; SPACED 8" IN" OPEN HEADS ON ROOF AS SHOWN; DRY SYSTEM IN BEAM & LEACH NO. 1; WET SYSTEM ELEC. WARE; SUPPLIED BY CITY WATER; ABOUT 25 GALS PRESSURE & BY UNCONSUMERS E.P. 15' & 10' 1/2" C.P. CY 1000 GALS.; WHICH DRAWS FROM MAIN; & RESERVOIR AS SHOWN; HIDE & ROPE RE-SHOWN; FIRE PAILS THROUGHOUT.



JUL 1910