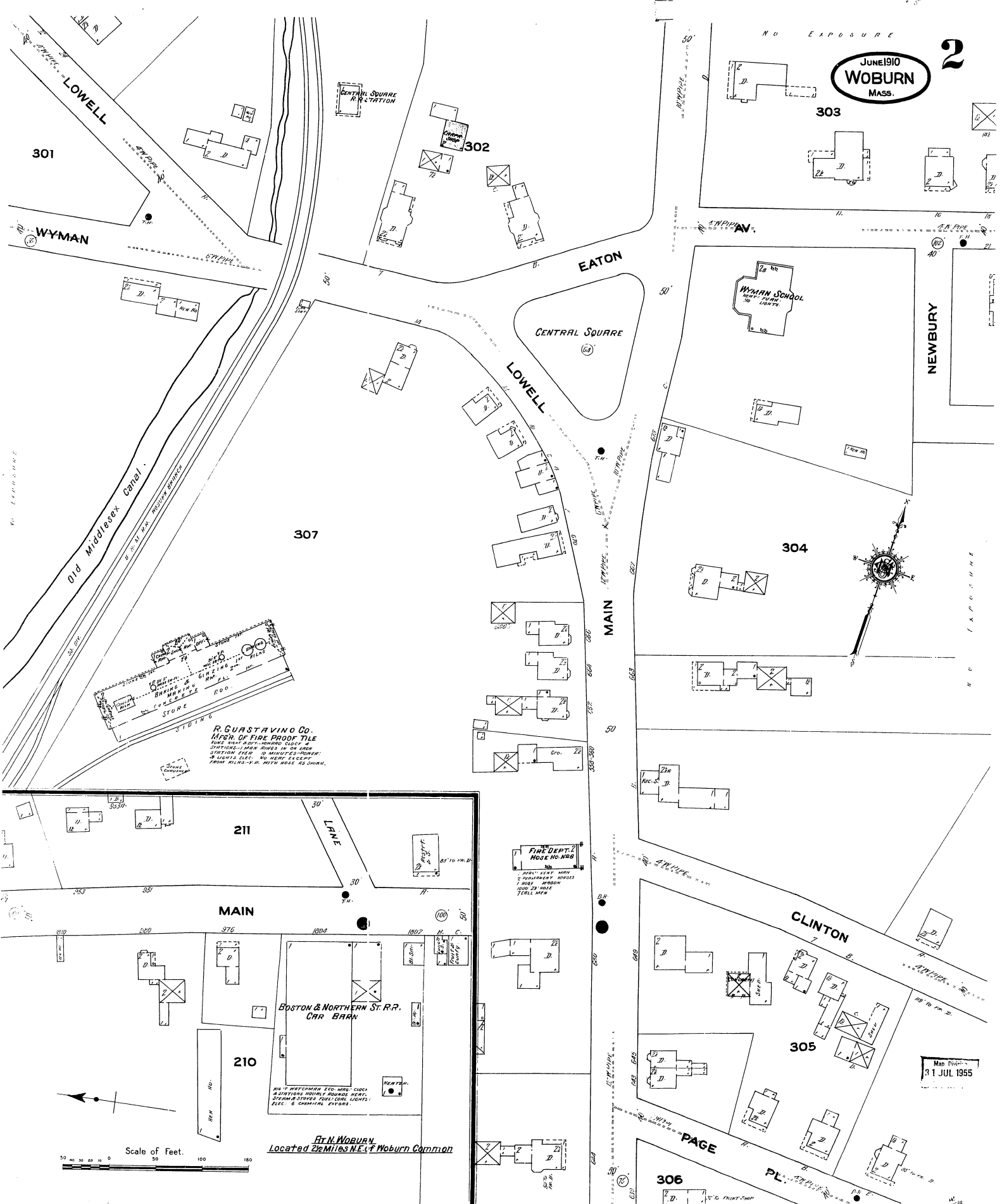


JUNE 1910  
WOBBURN  
MASS.

2



R. GUASTAVINO CO.  
ARCH. OF FIRE PROOF TILE  
SOME MOST IMPROVED QUALITY  
STANDARD-MAN RINGS IN 24 CROW  
SYSTEM EACH 20 MINUTES COVER  
4 LIGHTS ELEC. NO WIRE EXCEPT  
FROM BLDG. IN A. WITH HOSE AS SHOWN.

FIRE DEPT. 2  
HOSE NO. 148  
PARTY KEEP HOSE  
APPROPRIATE HOUSES  
ROAD WAGON  
HOLD 24 HOUR  
TILL MEN

BOSTON & NORTHERN ST. R.R.  
CAR BARN

At N. Woburn,  
Located 2 1/2 Miles N.E. of Woburn Common

Map Drawn  
11 JUL 1955

