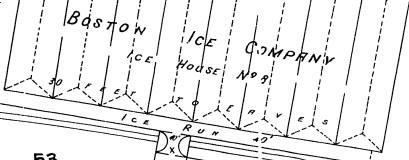
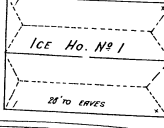
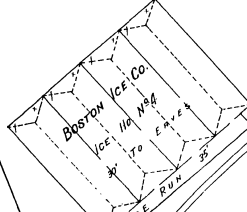


ARLINGTON RD

51

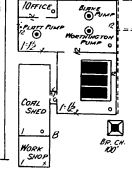


53



Horn Pond

GOVE CT.



**WOBBURN WATER WORKS
PUMPING STATION.**
RIGHT WATERWAY NO. 1000 FEET.
POWER SUPPLY 1000 FEET. LIGHTS ELEC.
1 MOTORING & 1 BLANK. PUMP CAPCY
200,000 GALLONS & 1 PLANT. PUMP CAPCY
300,000 GALLONS.

53

LAKE AV.

**EDISON LIGHT, HEAT & POWER CO.
TRANSFORMER STATION.**
TWO MEN ON DUTY IN ALL TIMES.
HARD STEEL FLOOR. LIGHT & POWER
ELECT. WIRE 40-1000. 400 SHOWN BRICK
ARCHED FLOOR. STEEL FRAME.
HANDSMITHS EXTORS. 12 DRY
EXTORS.

54

BOSTON ICE Co.
ICE Ho.
12' x 30' to EAVES.

43

BEACON ST.

42

STURGIS

ARLINGTON RD

WAGON SHED
135' TO BRICK &
GIBBS ICE HO.
SEE REFRIGERANT
SEE BELOW

95

Horn Pond

WATER

SHED

BROWN & GIFFORDS ICE HO.

ICE RUN

Horn Pond

SEE ABOVE

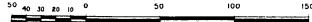
133

132

LAWRENCE

130

Scale of Feet.



Map Division
31 JUL 1995