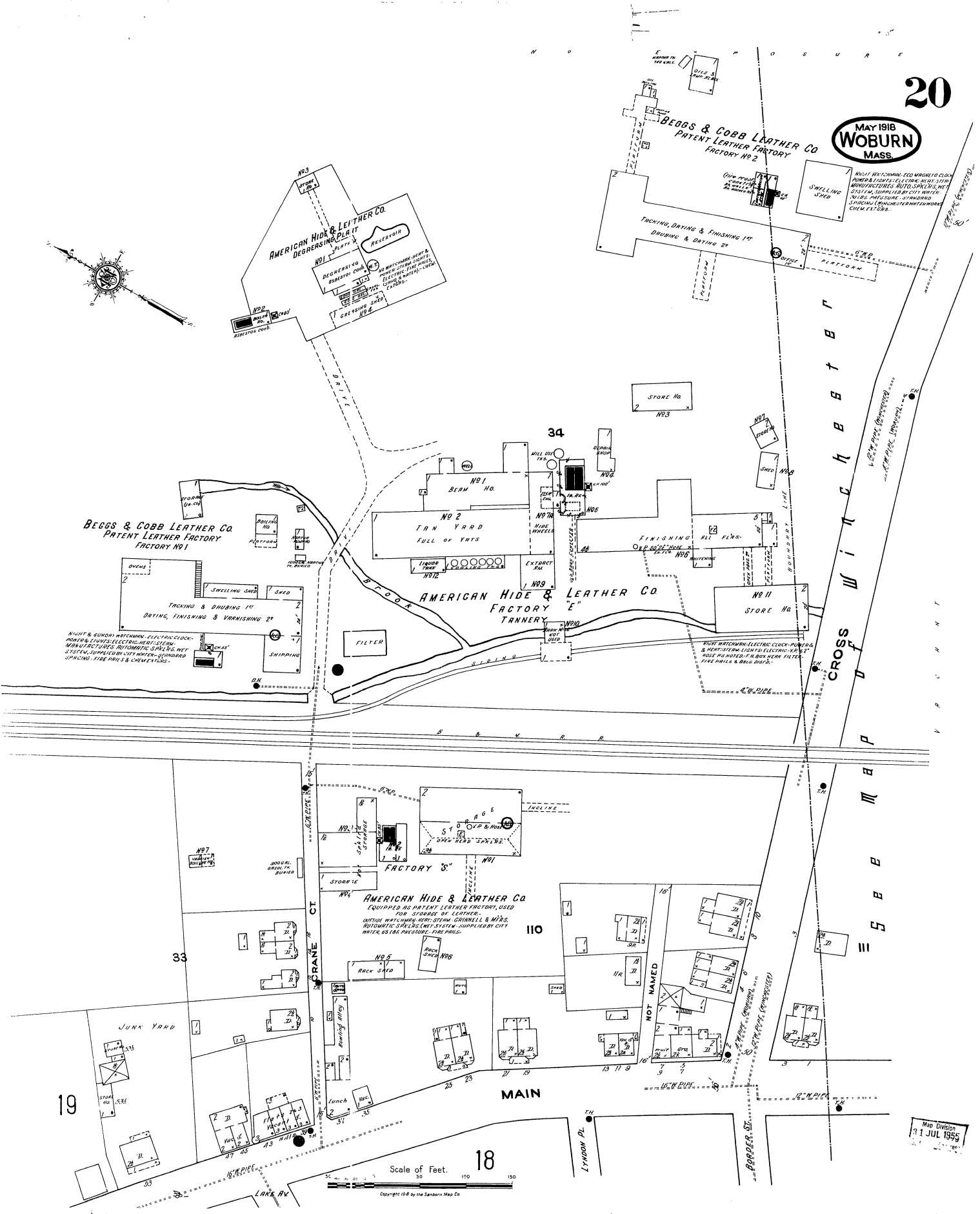


MAY 1918  
WOBURN  
MASS.



**BEGGS & COBB LEATHER CO.  
PATENT LEATHER FACTORY  
FACTORY NO. 1**

TACKLING & DRYING 1<sup>ST</sup>  
DYEING, FINISHING & VARNISHING 2<sup>ND</sup>

NIGHT & GUARD WATCHMAN ELECTRIC CLOCK  
PUMPS & LINES ELECTRIC HEAT SYSTEM  
WORKS & FACTORYS AUTOMATIC SPRINKLING  
SYSTEM SUPPLIED BY CITY WATER-GOODER  
SPRINKLING FIRE PUMPS & CHEMISTS

**AMERICAN HIDE & LEATHER CO.  
DEGREASING PLANT**

RESERVOIR  
DEGREASING  
RESERVOIR CONT.  
GALVANIZING SHED NO. 4

**AMERICAN HIDE & LEATHER CO.  
FACTORY TANNERY**

NO. 2  
TAN YARD  
FULL OF VATS

FILTER

**BEGGS & COBB LEATHER CO.  
PATENT LEATHER FACTORY  
FACTORY NO. 2**

TACKLING, DRYING & FINISHING 1<sup>ST</sup>  
DYEING & DRYING 2<sup>ND</sup>

SPINNING SHED

NOTE: THIS SHED IS EQUIPPED WITH A CLOCK  
AMERICAN LEATHER CO. PATENT LEATHER  
MANUFACTURING AUTO SPRINKLING  
SYSTEM SUPPLIED BY CITY WATER  
VATS PRESSURE STANDARD  
CITY WATER SUPPLY SYSTEM WORKS  
CHEMISTS

**AMERICAN HIDE & LEATHER CO.  
EQUIPPED AS PATENT LEATHER FACTORY, USED  
FOR STORAGE OF LEATHERS.**

OUTSIDE WATCHMAN HEAT SYSTEM GRINNELL & MARRS  
AUTOMATIC SPRINKLING SYSTEM SUPPLIED BY CITY  
WATER 65 LBS. PRESSURE - FIRE PUMPS

19

18

Scale of Feet.  
0 50 100 150

Map Division  
31 JUL 1959

Copyright 1948 by the Sanborn Map Co.