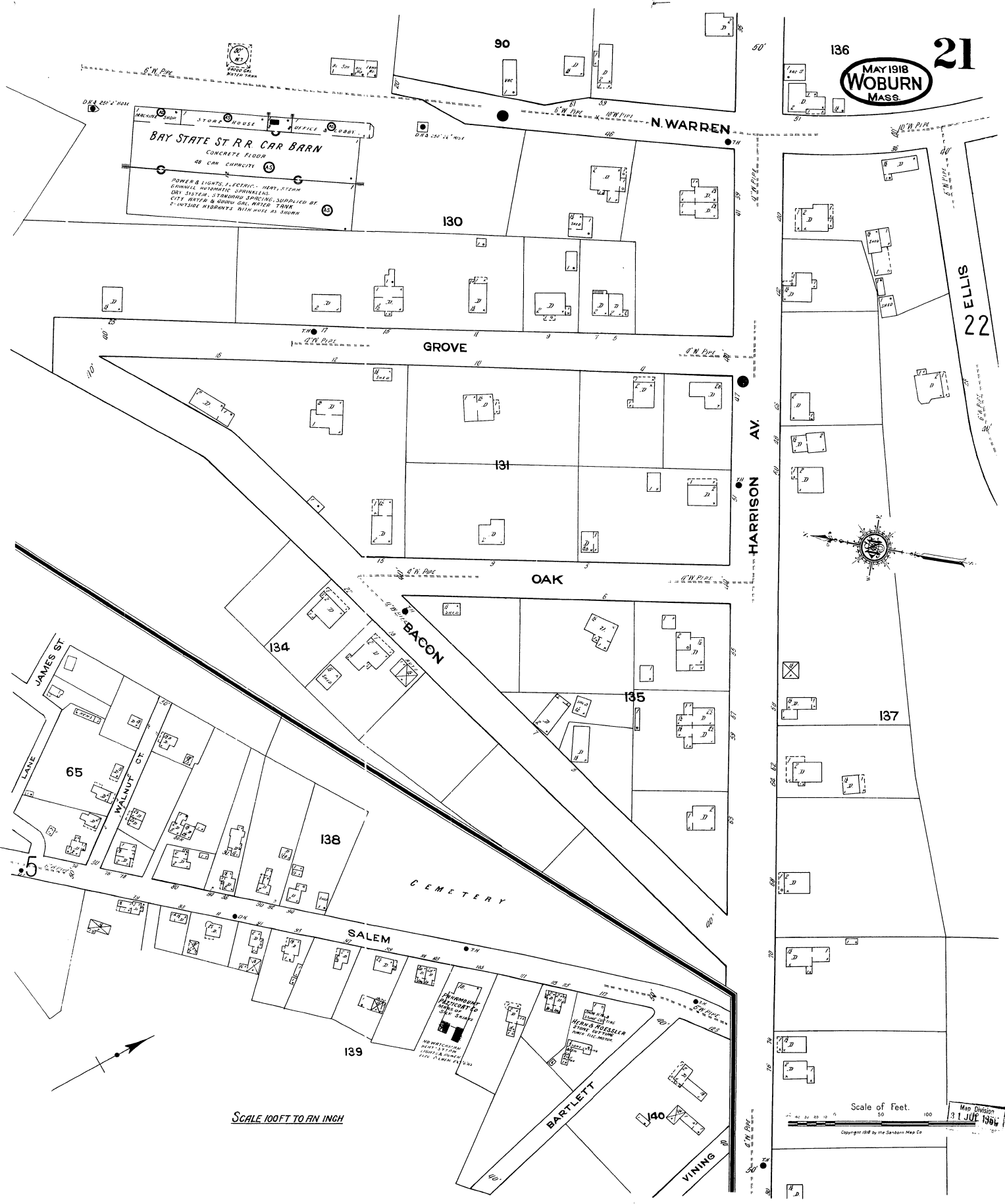


21  
MAY 1918  
WOBRUN  
MASS.



BAY STATE ST R.R. CAR BARN  
CONCRETE FLOOR  
48 CAR CAPACITY

POWER & LIGHTS, ELECTRIC, HEAT, STEAM  
COMPRESSED AIR, HYDRAULIC, SPRINKLING  
GAS SYSTEM, STAMMING SPRING, SUPPLIED BY  
CITY WATER & GROUND WATER TANK  
2" INSIDE DIMENSIONS SHOWN AS SHOWN

130

GROVE

131

OAK

BACON

135

137

138

SALEM

139

BARTLETT

140

VINNING

ELLIS  
22

SCALE 100 FT TO AN INCH

Scale of Feet. 0 50 100  
Map Division  
31 JULY 1964  
Copyright 1918 by the Sanborn Map Co.