

MERRIMAC CHEMICAL CO.

- CHEMICAL WORKS -

FOR NIGHT WATCHMEN, WITH FLINGS, EXTRA OUTSIDE & INSIDE ARMED GUARDS - PLANT IN CONSTANT OPEN TOWN - HEAT - STEAM - POWER - STEAM AND ELECTRIC 2 1/2" LINES, STAINLESS STEEL PIPING & HOSE REWORKING - WATER SUPPLY SUPPLIED BY CITY MAINS & TWO FIRE PUMPS, ONE UNDERGROUND TOWER 10' x 12' & ONE OUTSIDE TOWER 10' x 12' STEAM PIPING - ABOUT 40 CHEMICAL PIPINGS, DISTANCE - 1000' WIDE & 100' x 100' WIDE - UNGRADED FINE DRIFTING MUD.

SCALE 100 FT. TO AN INCH

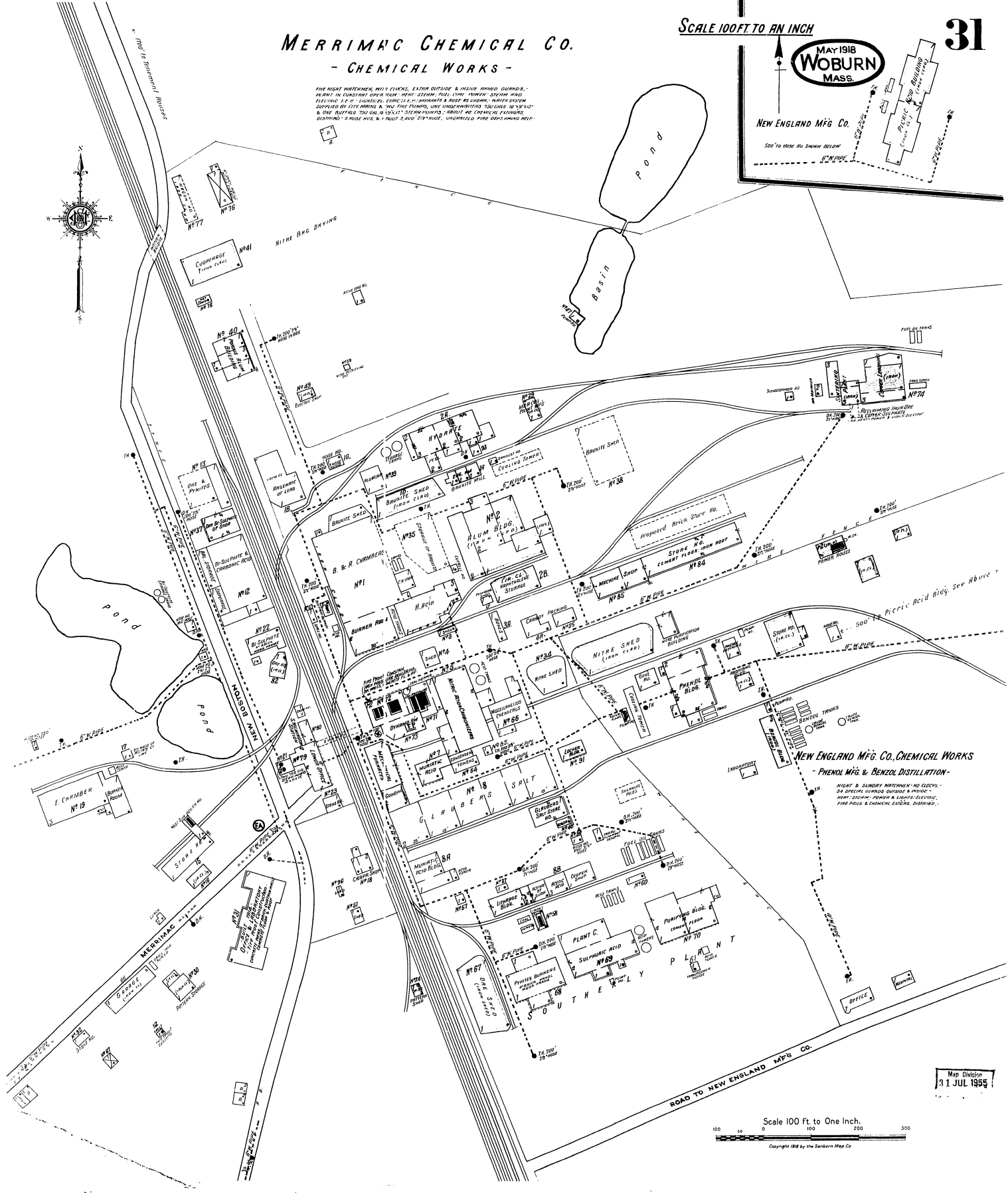
31

MAY 1918
WOBURN
MASS.

NEW ENGLAND MFG CO.

500' TO HERE IN SHOWN BELOW

5" WIDE



Map Division
31 JUL 1955

Scale 100 Ft. to One Inch.
0 100 200 300
Copyright 1918 by the Sanborn Map Co