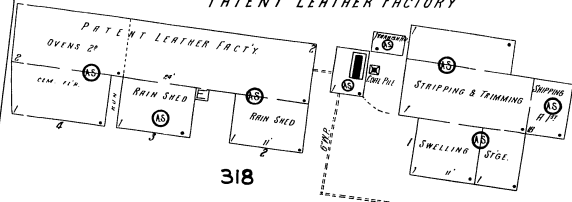




MAY 1926
WOBURN
MASS.

DRY RACKS
JOHN J. RILEY CO.

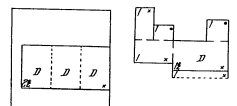
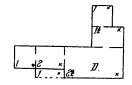
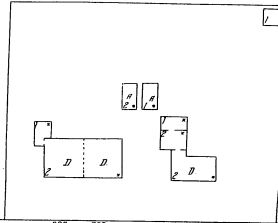
PATENT LEATHER FACTORY



318

NIGHT WATCHMAN - NO CLOCK - LIGHTS & POWER ELEC. - HEAT - STEAM - WINDING RIGID SPARKS - NET SYSTEM - CITY WATER - CEMENT AND LUMBER.

DRY RACKS

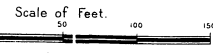
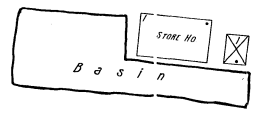


SALEM

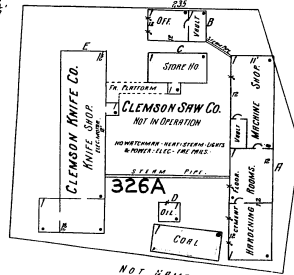
MURRAY LEATHER CO.
PATENT LEATHER FACTORY NO. 1

NIGHT WATCHMAN - NO CLOCK - 2 SERVICES - WIND STEAM - LIGHTS & POWER ELEC. - HEAT - RIGID SPARKS - NET SYSTEM - CITY WATER.

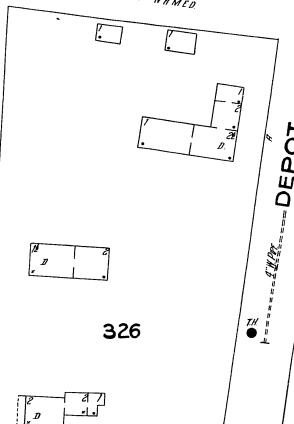
319



Copyright 1926 by the Johnson Map Co.



326A



326



R. R. LOCATION

R. R.

WOOD

WEST

DEPOT

125

12708